

● 發展項目的位置  
Location of the Development

摘錄自地政總署測繪處在 6,900 呎飛行高度拍攝之鳥瞰照片，照片編號 E255955C，飛行日期：2025 年 3 月 22 日。  
Adopted from part of the aerial photograph taken by the Survey and Mapping Office, Lands Department at a flying height of 6,900 feet, photograph no. E255955C, date of flight: 22 March 2025.

香港特別行政區政府地政總署測繪處 © 版權所有，未經許可，不得複製。  
Survey and Mapping Office, Lands Department, The Government of HKSAR © Copyright reserved - reproduction by permission only.

鳥瞰照片並不覆蓋本空白範圍

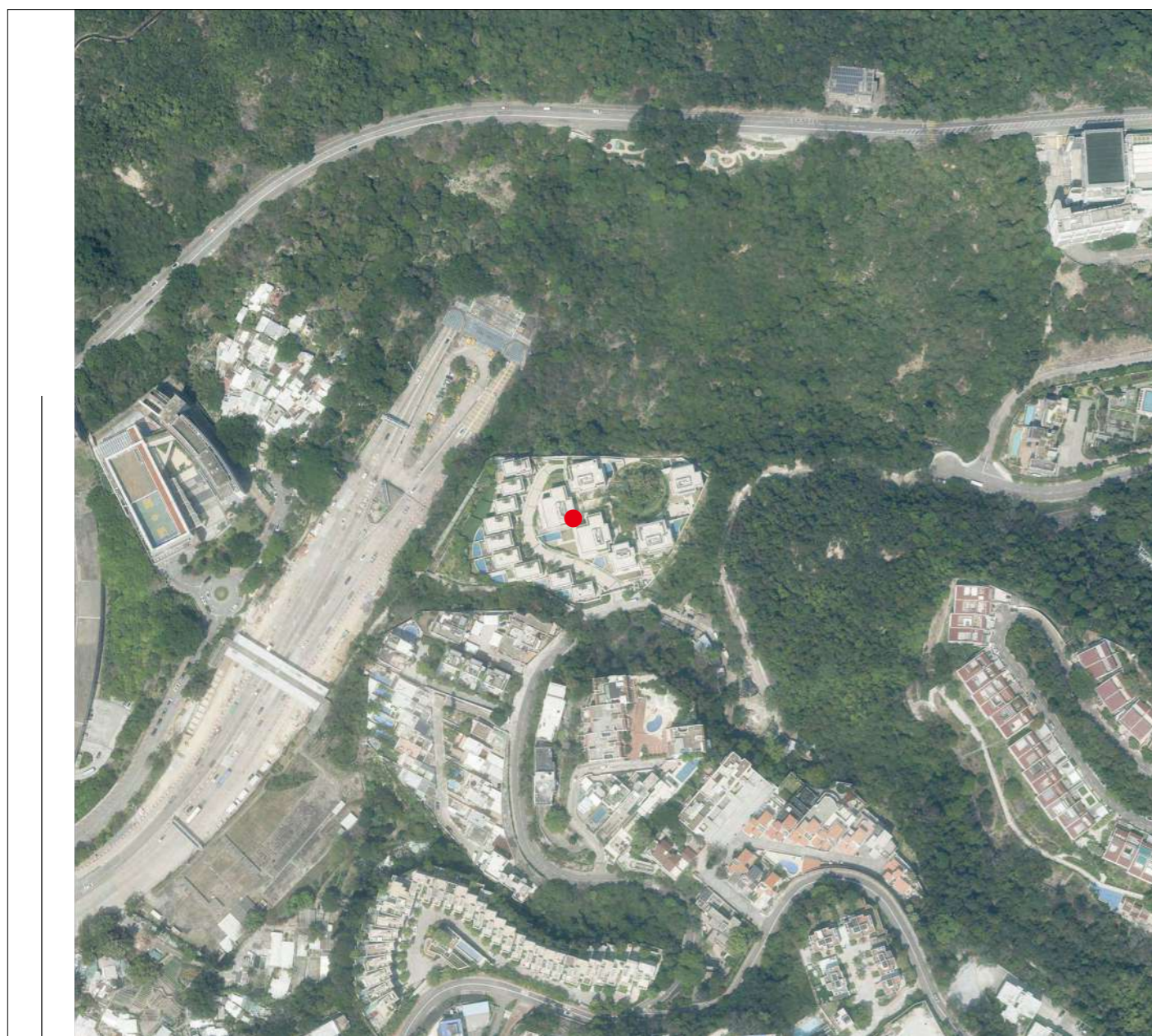
These blank area fall outside the coverage of the relevant Aerial Photograph

備註：

1. 發展項目的鳥瞰照片之副本可於售樓處開放時間內免費查閱。
2. 由於技術原因（例如發展項目形狀不規則），此鳥瞰照片可能顯示多於《一手住宅物業銷售條例》所要求顯示的範圍。

Note :

1. Copy of the aerial photograph of the Development is available for free inspection at the sales office during opening hours.
2. Due to technical reasons (such as the irregular shape of the Development), this aerial photograph may show more than the area required under the Residential Properties (First-hand Sales) Ordinance.



● 發展項目的位置  
Location of the Development

摘錄自地政總署測繪處在 6,900 呎飛行高度拍攝之鳥瞰照片，照片編號 E255956C，飛行日期：2025 年 3 月 22 日。  
Adopted from part of the aerial photograph taken by the Survey and Mapping Office, Lands Department at a flying height of 6,900 feet, photograph no. E255956C, date of flight: 22 March 2025.

香港特別行政區政府地政總署測繪處 © 版權所有，未經許可，不得複製。  
Survey and Mapping Office, Lands Department, The Government of HKSAR © Copyright reserved - reproduction by permission only.

鳥瞰照片並不覆蓋本空白範圍  
These blank area fall outside the coverage of the relevant Aerial Photograph

備註：

1. 發展項目的鳥瞰照片之副本可於售樓處開放時間內免費查閱。
2. 由於技術原因（例如發展項目形狀不規則），此鳥瞰照片可能顯示多於《一手住宅物業銷售條例》所要求顯示的範圍。

Note :

1. Copy of the aerial photograph of the Development is available for free inspection at the sales office during opening hours.
2. Due to technical reasons (such as the irregular shape of the Development), this aerial photograph may show more than the area required under the Residential Properties (First-hand Sales) Ordinance.

刪除不相關的「發展項目的鳥瞰照片」。本頁故意留白。  
Irrelevant 'Aerial photograph of the Development' is deleted. This page left blank intentionally.